

SCANDINAVIAN STRANDED SCARF

by Laura Farson

BEYOND THE PATTERN

This scarf was inspired by a fine knit machine made scarf purchased in Norway. I wanted to knit a scarf with a stranded pattern, but not knit flat. (Stranded knitting in the round is less difficult than flat and the color shifts line up better). While scarves can be manipulated to show just the public side, I wanted it to be easily wrapped around the neck without a lot of fuss. The challenge is in producing a fabric that is pleasant on the back as well as the front side while using two yarns. For the stranded areas, floats are minimized by carrying the yarns for no more than two stitches. Border areas are designed to minimize curling. There are few patterns using two yarns that show an attractive back side other than brioche stitch or slip knitting. These are not as authentic in stranded knitting. The Seed stitch areas (with alternating light strand purling and the dark strand knitting) are intended to keep the patterned areas flat.

Splitting the tube lengthwise causes a natural curling effect as stranded knitting acts like Stockinette. To take advantage of this, the center section is stocking stitch with just one strand. The cut edges also take advantage of curling with the steek stitches knit in a stranded stripe. Upon cutting, the edges curl under. This edge is rolled and sewn with a slip stitch mimicking an I-cord along its length.

This scarf is a great first stranded knitting project. It has all the elements – two-color pattern, tension, hand positions and a steek without the complexity of a whole garment. I love the contrast of dark and light playing through the star pattern. Colors can be adjusted to masculine or feminine. It can also be made with one variegated yarn that contrasts with the solid.



Scandinavian Stranded Scarf by Laura Farson



Size: One size fits all

Finished Measurements:

Width: 11"

Length: 48"

Materials:

Plymouth WORSTED MERINO SUPER-WASH (3.5oz/100g, 218yds/199m, 100% Superwash Fine Merino Wool):

2 skeins Navy (A), 1 skein Grey (B)

Size 7 (4.5mm) 16" (40.64cm) circular

needle or size needed to obtain correct gauge
Smooth waste yarn (wy) in contrasting color

Tapestry needle

Size D (3.25mm) Crochet Hook

Stitch markers

Gauge:

In St st, 10 sts & 14 rows = 2"/5 cm. To save time, take time to check gauge.

Abbreviations:

TK = Twine Knit – as indicated, “wrap back strand over the front strand” or “wrap back strand under the front strand”.

Stitch Patterns

Stranded Stripe Pattern:

A Closer Look



The dark yarn will be more dominant. Be sure to hold the yarns consistently. All Rows: *With Color A in left hand/carried under, K1, with Color B in right hand/carried over, K1, rep from * around.

TECHNICAL TIP: If you hold color B in the left hand and color A in the right, it is easier to make the transition from knit to purl and back.

Two-color Seed Stitch:

Knit into the purl with color A and purl into the knit with color B.

Rnd 1: Wyib *K1 Color A, with Color B in front, P1, return B to back, rep from * around.

Rnd 2: *With Color B in front, P1, return B to back, wyib, K1 Color A, rep from * around.

Horizontal Border:

Alternate carrying Color B every other st to balance extra yarn on the back side.

On first round carry B on the second and fourth st. On second round, carry B behind the first and third st.

Rnd 1: With Color A in RH, k1 Color A; carry Color B in LH, k1 Color A. Cont carrying Color B as a float every other st.
Rnd 2: Carry B as float behind first, (third, fifth, etc.) st.

Twined Stripe:

This makes a more interesting Pat on the back side and it makes a more even stripe on the front. For this scarf, there are two 4-st sections – eight sts total.

To Twine knit “over”, using back strand first, bring yarn over the other strand, knit one st. Second st, carry the other strand over strand just used. Cont alternating the strands bring back strand over the front.

*TK1 Color A over B, TK1 Color B over A, rep from * 3 times.

Twine knit under using back strand, knit one st; carry the other strand “under” knit one st.

*TK1 Color A under, TK1 Color B under, rep from * 3 times.

TECHNICAL TIP: Floats in the Scandinavian Star Pattern are captured in the middle of three and five stitch repeats. Catch every other stitch when there are more than five stitches.

Ribbing:

With Color A, *k3, p1 rep from * around.

Provisional Cast On:

Make a slip knot in the wy and place on the crochet hook.

Hold knitting needle in your LH and bring yarn from crochet hook under needle. Draw yarn through loop on the crochet hook.

Replace yarn under the crochet hook.

Rep making loops over the needle until there are desired number.

Make a 5 st chain, cut yarn 3" and pull cut end through last chain.

Scarf

DESIGNER NOTE: The neck is worked toward each end of the scarf to facilitate identical bind offs at both ends. The first section is shorter just for handling ease. Once it is complete, the waste yarn is removed as the stitches are picked up. Knitting then progresses toward the opposite end.

First Section of the Neck

With wy and crochet hook, using Provisional Cast On, CO 75 sts.

Slip first wy st to RH needle.

With Color A, k to last wy st. Join by knitting the last and the slipped wy sts tog – 74 sts.

With Color A cont to knit St st in the rnd until piece meas 5".

Stranded Stripe transitions between plain neck and charted Pat.

(Begin the second section here after completing the first section.)

Knit Stranded Stripe Pattern for 18 rnds. The next rnd begs at an outer edge of the steek.

PMs bet the Pat sections as follows:

19 Steek sts, 9 Two-color Seed sts, 3 Border sts, 8 Twined Stripe sts, 15 Two-color Seed sts, 8 Twined Stripe sts, 3 Border sts, 9 Two-color Seed sts.

Rnd 1: (Steek Stranded Stripe). K1 A, *k1 B, k1 A, rep from, * 9 times – 19 sts.

Two-color Seed st: K1 A, *p1 B, k1 A, rep from * 4 times – 9 sts.

Border: K3 A – 3 sts.

Twined Stripe: TK1 A over, TK1 B over, rep from * once, TK1 A under, TK1 B under, rep from * 1 time – 8 sts.

Two-color Seed st: K1 A, *p1 B, k1 A, rep from * 7 times – 15 sts.

Twined Stripe: *TK1 A over, TK1 B over, rep from * once, *TK1 A under, TK1 B under, rep from * 1 time – 8 sts.

Border: K3 A – 3 sts.

Two color-Seed st: K1 A, *p1 B, k1 A, rep from * 4 times – 9 sts.

Rnd 2: Steek Stranded Stripe: K1 A, *k1 B, k1 A, rep from * 9 times – 19 sts.

continued on page 32

continued from page 31

Two-color Seed st: P1 B, *k1 A, p1 B, rep from* 4 times – 9 sts.

Border: K3 A – 3 sts.

Twined Stripe: *TK1 A over, TK1 B over, rep from* once, *TK1 A under, TK1 B under, rep from* 1 time.

Two-color Seed st: P1 B, *k1 A, p1 B rep from* 4 times – 9 sts.

Border: K3 A – 3 sts.

Twine Stripe: *TK1 A over, TK1 B over, rep from* once, TK1 A under, *TK1 B under, rep from* 1 time.

Two-color Seed st: P1 B, *k1 A, p1 B rep from* 4 times – 9 sts.

Rep Rnds 1 & 2 for a total of 15 rnds, end with Rnd 1.

Change center 15 Two-color Seed sts to Stranded Stripe for 5 rnds.

This gives 31 Stranded Stripe sts in the Center Section.

Change 31 Center Stranded Stripe sts to 5 rnds of Horizontal Border in Color A while carrying Color B.

Chart Section

TECHNICAL TIP: Think of the stitch markers as a signal to change the pattern and possibly the hand position.

Change center markers: Steek 19 sts, Two-color Seed 9 sts, Border 3 sts, Chart 31 sts, Border 3 sts, Two-color Seed st 9 sts.

Rnd 1: Steek: K1 A, *k1 B, k1 A, rep from* 9 times – 19 sts.

Two-color Seed st: K1 A, *p1 B, k1 A, rep from* 4 times – 9 sts.

Border: K3 A – 3 sts.

Chart Rnd 1 – 31 sts. Change for subsequent rnd.

Border: K3 A – 3 sts.

Two-color Seed st: K1 A, *p1 B, k1 A, rep from* 4 times – 9 sts.

Rnd 2: Steek: K1 A, *k1 B, k1 A, rep from* 9 times – 19 sts.

Two-color Seed st: P1 B, *k1 A, p1 B rep from* 4 times – 9 sts.

Border: K3 A – 3 sts.

Chart Rnd 2 – 31 sts change for subsequent rnds.

Border: K3 A – 3 sts.

Two-color Seed st: P1 B, *k1 A, p1 B rep from* 4 times – 9 sts.

Rep Rnds 1 & 2 until chart is complete.

Replace center 31 chart section sts with Color A for 5 Border rnds carrying Color B. Cut Color B at 3".

Hem

With Color A only, k3, p1 rib for 8 rnds. Cut yarn 4 times circumference of scarf.

DESIGNER NOTE: I used Elizabeth Zimmerman's Sewn Bind Off.

1. Thread the cut end of yarn through the tapestry needle.
2. Pull the tapestry needle purlwise through the first two stitches on left needle. Draw yarn snug leaving stitches on the needle.
3. Insert the needle knitwise back through only the first stitch.
4. Drop this stitch off the left needle. Draw the yarn snug.

Repeat steps 2-4 for remaining stitches.

Bind off with sewn bind off. Do not cut the remaining yarn. Use it later for sewing the rolled edge.

Second Section on the Neck: Back neck
Carefully remove wy by picking up ea Color A st and dropping off wy loop and knit with Color A, i.e. "pick up and knit".

Knit St st in Color A for a total of 20" or desired length.

Work as for first section beginning at the Stranded Stripe transition.

Finishing

Because the raw edge will be rolled under and encased in a sewn seam, it is not necessary to reinforce the steek. Reinforcing

yarn will make the edge quite thick and stiff. However, if desired, using matching yarn, place running stitches through every stitch two stitches out from the center steek stitch on both sides.

Cutting the Steek

TECHNICAL TIP: Cut the steek from the bound off end up just to the solid color area. Second, cut from the other bound off end to the solid area and then cut the center solid color section.

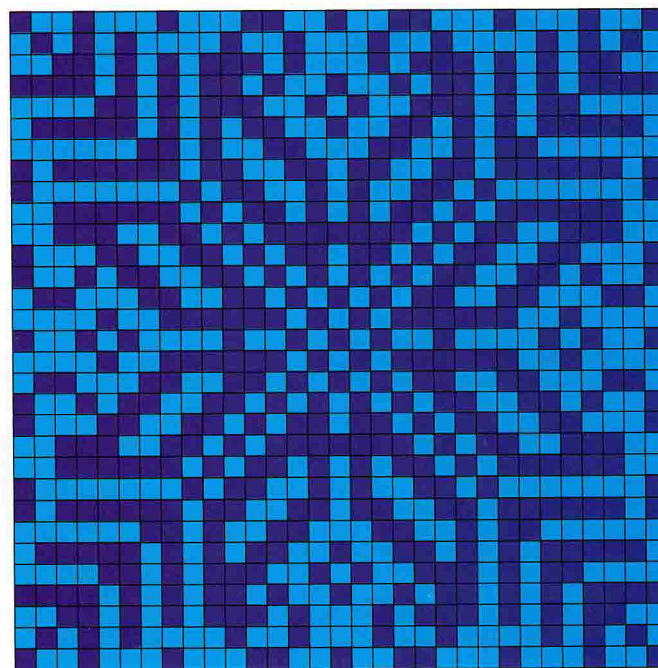
At one end of the tube, (being careful to just cut one layer) cut center steek st through the middle of stitch.

The fabric will roll onto itself.

Roll edge under so that there are 4 stripes showing on the Front and 4 on the Back. Pin or clip. With yarn left from the bind off threaded into a tapestry needle, sew an overcast stitch into fourth stitch to inner layer of the scarf. Place next stitch into the back side of scarf just catching the yarn strand.

Continue overcasting entire length of the rolled edge. With another length of color A repeat for second side. Weave in ends.

Block by steam pressing the center between the rolled edges on a towel. Pin to shape, spritz and let dry.



■ Color A ■ Color B