

Apurimac Hat

By Leslie Gonzalez



Beyond the Pattern

I was thrilled to get the go-ahead to write the article on earflap hats. There are so many fun ideas for earflap hats to choose from. I finally decided to design an Andean Chullo style hat. What a deep rabbit hole it turned out to be to explore. The colors and motifs are fun, and there is quite a bit of freedom for design.



I chose to go with the rainbow-style strip for shaping the earflaps. A strip of colored squares is worked first. In the middle of the strip a short-row triangle is formed. Then stitches are picked up along the curved edge, this being the basic way to form the earflap. From there the squares can be embellished by checkerboard and even alternating triangles around the base. The earflap is shaped using two mirrored double decreases at the center. When approximately one third of the stitches are left, the flap is folded in half and joined. In this pattern I used a three-needle bind off, but you could easily bind off the stitches and seam the center together. This produces a slightly concave earflap.

These hats, traditionally worked in Peru and Bolivia, are worked in colorful motifs. Traditional chullos from the Andes include colors, figures, and shapes that represent local traditions and customs. They also help identify people of the region.

Apurimac (pronounced apu'rimak) is a region located in south-central Peru next to Cusco. The Quechua tribes, native to the area, named the region Apurimac which translates to "where the gods speak." The Inka religion uses the term Apu in reference to a mountain with a living spirit. The locals say that the mountains in the area seem to be talking to each other. A few other words from this ancient language that we knitters

would recognize include llama and vicuña!

Size

Adult Medium

Finished Measurements

Circumference at brim: 21"

Height: approx 10"

Materials

Berroco ULTRA ALPACA LIGHT (144yds/133m, 1.75oz/50g, 50% Super Fine Alpaca, 50% Peruvian Wool): 1 skein each #42111 Zephyr (A), #4267 Orchid (B), #4268 Candied Yam Mix (C), #4275 Pea Soup Mix (D), #4281 Redwood Mix (E), #4277 Peat Mix (F), and #4201 Winter White (G)

Size 2 (2.75mm) 16" (40cm) needles and dpns or size needed to obtain gauge

Stitch markers

Tapestry needle

Gauge

Over Apurimac Hat Chart in St st, 28 sts & 30 rows = 4"/10cm. To save time, take time to check gauge.

DESIGNER NOTE—I chose to use a DK (#3 Light weight yarn) on size 2 needles to create a durable hat with dense fabric, providing warmth plus protection from the wind.

Abbreviations

w&t—wrap and turn: Used for the triangle section of the earflap, worked in garter stitch. Knit the designated number of stitches, slip the next st as if to purl, bring the yarn to the front of the work and slip the st back to the left needle. Turn the work and continue as directed.

sk2p—left-leaning double decrease: Slip the next st as if to knit, knit 2 sts together, pass the slipped st over the newly knit st.

k3tog—right-leaning double decrease: Knit three sts together.

s2kp—central double decrease: Slip the next two sts together as if to knit. Knit the next st, then pass the two slipped sts over the knitted st.

Special Techniques

Three-needle bind off—Used to join earflap sides together. Divide the sts in two and place on two dpns. Fold earflap in half with right sides facing each other. With needle points facing right, use a third dpn to work. Insert working needle into the first st on the front needle, then the first st on back needle. Draw yarn through and remove both sts, knitting them together. Rep this step on the next two sts. On the right hand needle, pull the first st over the new st, binding off one st. Cont in this manner until 1 st remains on right needle. Cut yarn and pull through final st, pull tight to secure.

Cable cast on—Place a slipknot on the left needle. Insert right needle as if to knit, wrap yarn as if to knit and draw yarn through. Rotate the right needle clockwise, and insert the left needle into the loop from left to right; remove the working needle. *Insert working needle between the first and second sts on the left needle. Wrap yarn as if to knit and draw yarn through. Rotate the needle clockwise, insert the left needle into the loop from left to right and remove the working needle. Repeat from * until the number of sts needed is on the needle. Count the slipknot as the first stitch.

Re-starting the Cable cast on after picking up sts on the earflap: Turn work so WS is facing. Insert working needle between the first and second sts on the left needle. *Wrap yarn as if to knit and draw yarn through. Rotate the needle clockwise, insert the left needle into the loop from left to right and remove the working needle. Repeat from * until the number of sts needed is on the needle.



Hat Directions

Ear Flap (Make 2)

Part 1: Garter Stitch Edge

Color Strip Side 1:

With A, CO 5 sts. Knit 8 rows, ending with a WS row, break yarn.

Join B: Knit 8 rows, break yarn.

Join C: Knit 8 rows, break yarn.

Join D: Knit 8 rows, break yarn.

Join E: Knit 8 rows, do not break yarn.

TECHNICAL TIP—Leave enough yarn to weave in tails

when starting and breaking yarn.

Work Triangle short rows:

Join F and work as follows:

Row 1 (RS): Knit 5 sts.

Row 2 (WS): K4, w&t.

Row 3: Sl 1, k3, turn.

Row 4: K3, w&t.

Row 5: Sl 1, k2, turn.

Row 6: K2, w&t.

Row 7: Sl 1, k1, turn.

Row 8: K1, w&t.

Row 9: Sl 1, turn.

Row 10: K5.

Break yarn.

TECHNICAL TIP—You do not need to pick up the wraps from the wrap and turns in garter stitch since they will blend in with stitch pattern.

Color Strip Side 2:

Cont with E: Knit 8 rows, break yarn.

Join D: Knit 8 rows, break yarn.

Join C: Knit 8 rows, break yarn.

Join B: Knit 8 rows, break yarn.

Join A: Knit 8 rows, break yarn.

BO all sts in A.

Weave in tails.

Insert LG_Pattern photo 1.jpg here.

Part 2: Center of Flap

With F, and RS facing, pick up and knit 42 sts along the inner curved side of the color strip in this manner: 20 sts along Side 1, pm, 2 sts on either side of the Triangle, pm, 20 sts along Side 2—42 sts. Cont with F, knit 1 row.

Change to Color A and work:

Row 1 (RS): Knit to 3 sts before marker, sk2p, sl marker, k2, k3tog, knit to end — 38 sts.

Row 2 (WS): Knit.

Rep Rows 1 and 2 as follows:

Color E: one time.

A: one time.

B: one time.

A: one time.

E: four times — 10 sts rem.

Divide the sts in half placing 5 sts on one dpn and 5 sts on a second dpn, removing markers. Fold the flap in half so the right sides are together. Using three-needle bind off, join the center together. Weave in ends.

Make second flap to match.

Main Hat

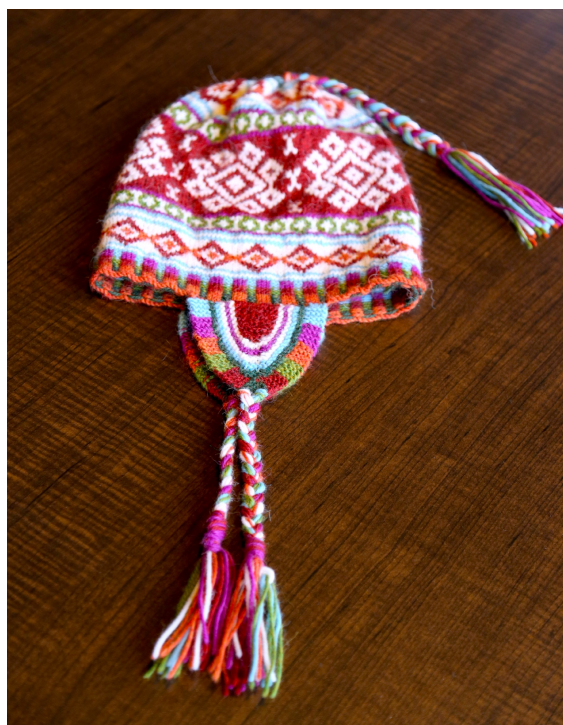
With C and 16" circular needle and using the cable cast on, CO 24 sts. On first earflap, pick up and knit 27 sts in the following manner: 5 sts along the cast on edge, 17 sts across the center section, 5 sts along the bound off edge — 27 sts over earflap. Using the cable cast on, CO 48 sts. Pick up and knit 27 sts on second earflap as on first earflap. Cable cast on 24 sts. Join in the round, being careful not to twist, and knit 1 rnd with A — 150 sts.

DESIGNER NOTE— The back of the hat is divided by the round start. The front of the hat will be worked on the 48 stitches cast on after the first earflap. Be sure to check that these 48 stitches are not twisted before picking up stitches along the second earflap. Prior to joining in the round be sure the work is not twisted as earflaps can spin on the needles, twisting the work.

Work Rnds 1-60 of Apurimac Hat Chart A five times around the hat.

Begin crown shaping, changing to dpns when needed.

Next Rnd: With B, *k23, k2tog; rep from * to end of rnd — 144 sts.



Work Rnds 1-9 of Apurimac Hat Chart B six times around the hat.

Next Rnd: With A, *k16, k2tog; rep from * to end of rnd—136 sts.

Next Rnd: With G, knit 1 rnd.

Next Rnd: With A, k2, *k2tog, k20, rep from * six times, end k2—130 sts.

Work rows 1-12 of Apurimac Hat Chart C. Work boxed stitches six times around the hat then work the last 10 sts to the end of the round—78 sts.

TECHNICAL TIP—If you find you've made a minor error in the color patterning, place a thread or removable stitch marker at the spot. Once the hat is finished, you can go back and duplicate stitch over the error in the correct color.

DESIGNER NOTE—To keep the CDD central to the final motif, a decrease must be worked between rounds. To do this, on the round before the CDD work to the last stitch, then move the last stitch to become the first stitch of next round. This moves the marker 1 stitch to the right.



Continue as follows:

Rnd 86: With G, knit to the last st, move the last st to become the first st of the next rnd.

Rnd 87: With A, *s2kp, k3; rep from * to end—52 sts.

Rnd 88: With F, knit to the last st, move the last st to become the first st of the next rnd.

Cont with F:

Rnd 89: *S2kp, k1; rep from * to end—26 sts.

Rnd 90: Knit to end.

Rnd 91: *K2tog; rep to end—13 sts.

Cut yarn leaving a 12" tail and, using a tapestry needle, thread through remaining stitches and pull shut.

Finishing.

Weave in tails and block.

Make ties:

Cut two 2-foot lengths of the following colors: A, B, C, E, F, G.

Pair the lengths as follows in four-strand bundles A/F, B/E, C/G.

Fold each bundle in half. Using a crochet hook pull the folded edge of each bundle through three consecutive stitches at the bottom of the earflap in the triangular area so that a 2" loop is formed. Pull the remainder of the section through the loop — similar to making fringe. Braid the three sections for 5". Using the middle bundle wrap the yarn around the base of the tie and tie off all ends. Cut the remaining yarn into a 2" tassel.

Repeat for the second earflap.

Make top tassel.

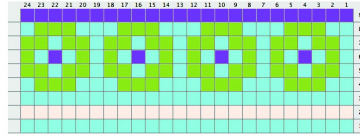
Cut two 2-foot lengths of the following colors: A, B, C, E, F, G.

Using a tapestry needle, pull each strand through the top of the hat so that both ends are to the right side, pairing the lengths as follows in four-strand bundles by placing the colors near to each other: A/F, B/E, C/G. Braid the three sections for 5". Using the middle bundle, wrap the yarn around the base of the tie and tie off all ends. Cut the remaining yarn into a 2" tassel.

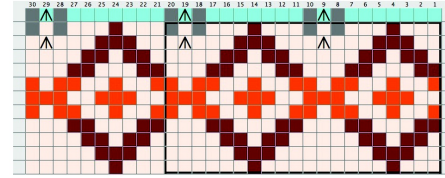
Apurimac Hat Chart A



Apurimac Hat Chart B



Apurimac Hat Chart C



Legend:

- Knit with A
- Knit with B
- Knit with C
- Knit with D
- Knit with E
- Knit with F
- Knit with G
- Purl with A
- Purl with D
- Purl with F
- ▲ S2kp with A
- ▲ s2kp with G

Notes:

Rnds 9 & 10: Work until 1 st remains. Use last st of Rnd 9 to work the CDD at the start of Rnd 10.
 Rnds 11 & 12: Work until 1 st remains. Use last st of Rnd 11 to work the CDD at the start of Rnd 12.