

KAL PLANNER



- MY PLAN
- Short Sleeve
 - Long Sleeve
 - Cropped
 - Standard Length
 - Slip Stitch
 - Mosaic



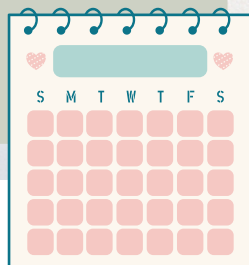
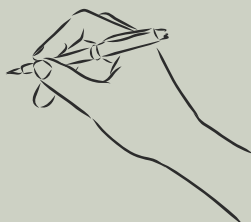
A Study In Contrast Pullovers designed by Therese Chynoweth

SIZES

XS (S, M, L, 1X) [2X, 3X, 4X, 5X]
Finished Chest Circumference: 32 (36, 40.25, 44.25, 48) [52, 56, 60, 64]"

CHECK LIST

- Order Yarn
- Gather all Tools
- Mark Dates on Calendar
- Print Pattern



KEY DATES

2025:

- 10/15 Yarn Discount Begins
- 11/1 Pattern Releases in Cast On
- 11/1 Pattern Releases on Ravelry
- 12/31 Yarn Discount Ends

2026:

- 1/17 KAL Launch Party on Zoom
- 2/7 KAL Progress Update Zoom



Universal Yarn **BAMBOO POP**

(292yds/ 267m, 3.5oz/100g
50% bamboo, 50% cotton)

When choosing your colors, make sure the painted colorway (CC) has enough contrast with your solid color (MC) so that it stands out

YARN

Long Sleeve Standard Length: 3 (4, 4, 4, 5) [5, 5, 6, 6] balls #133 Lemongrass (MC); 1 (1, 1, 1, 1) [1, 1, 1, 2] ball(s) #204 Happy Birdie (CC)

Short Sleeve Cropped: 2 (3, 3, 3, 3) [4, 4, 4, 5] balls #140 Crocodile (MC); 1 (1, 1, 1, 1) [1, 1, 1, 2] ball(s) #226 Fresh Cut (CC)

NEEDLES



Size 4 (3.5mm) circular needles, 16" (40cm), 24" (60cm) and 32" (80cm)
Size 4 (3.5mm) double-pointed needles, or size needed to obtain gauge

NOTIONS

- Stitch markers
- US size G-6 (4 mm) crochet hook (for provisional CO)
- Tapestry needle
- Waste Yarn



GAUGE

- In St st, 21 sts & 29 rnds = 4"/10cm
- In Slip st, 21 sts & 44 rnds = 4"/10 cm
- In Mosaic, 22 sts & 58 rnds = 4"/10cm

