

Cast On 2014



Table of Contents

Girl's Dress and Woman's Jacket by Melissa Leapman	1
Sunday Socks by Charles D. Gandy	2
Aran Turtleneck by Melissa Leapman	3
Brioche by Trudianne Temple	4
Mary, Mary Quite Contrary Socks by Arenda Holladay	5
Broken Stitches in One Row by Binka Schwan	6
Mary's Birthday Sweater by Mary Gildersleeve	7
Cowls by Leslie Gonzalez	8
Decreases Part 2 Revisited by Binka Schwan	10
Decreases Part 1 Revisited by Binka Schwan	11
Designing an Aran by Charles Gandy	12
Kitchener Stitch by Arenda Holladay	14
Repairing Split Stitches in Finished Items by Binka Schwan	15
Researching for the Masters by Joyce Jones	16
Slip Stitch Knitting Redux by Leslie Gonzalez	17
The "Write" Stuff by Sharon Levering	18
Three-Needle Bind off by Arenda Holladay	19
Striped Garter & Slip Stitch Scarf by Mary Anne Todd	20
Demystifying the Yarn Over/Decrease Relationship in Lace by Leslie Gonzalez	21
July Clover Sweater by Trudianne Temple	22
Classic Pencil Skirt by Arenda Holladay	23
Coco Jacket by Arenda Holladay	24
Elise Jacket by Melissa Leapman	25
Nordic Sweaters for the Entire Family by Arenda Holladay	26
Autumn Tree Socks by Catherine Reitsema	27
Entrelac Infinity Scarf by Gwen Bortner	28
Thara Cowl by Kyle Kunneke	29
Setesdal Cardigan by Jaclyn Hagen	30
Intarsia by Suzanne Bryan	31
Men's Vests by Charles Gandy	33
Seaming Stair Step Edges by Arenda Holladay	34
Cable Challenge Poncho and Infinity Scarf by Nancy Totten	35
The History of the Humble Pattern - Part 2 by Kara Rudnick	36
Seaming Bound Off Edges by Arenda Holladay	37
Lace: The Dainty Doily by Carolyn Vance	38
Fixing a Broken Pulled Stitch by Binka Schwan	39
Dog Sweaters by Leslie Gonzalez	40
Widget's Rainbow Dog Sweater by Pamela Haswell	41
Summer Nights by Arenda Holladay	42
Classic Twin Set by Arenda Holladay	43
Split Stitches by Binka Schwan	44
Puffy Hat and Cowl Set by Kathy Perry	45

Girl's Dress and Woman's Jacket by Melissa Leapman

By arendje | Cast On 2014

This [pattern](#) appeared in the February-April 2014 issue.

Sunday Socks by Charles D. Gandy

By arendje | Cast On 2014

This [pattern](#) appeared in the February - April 2014 issue.

Aran Turtleneck by Melissa Leapman

By arendje | Cast On 2014

This [pattern](#) appeared in the August-October 2014 issue.

Brioche by Trudianne Temple

By admin | Cast On 2014

Stitch Anatomy November 2014-January 2015

This [article](#) which appeared in the November 2014-January 2015 (Winter 2014) issue is part of the Stitch Anatomy series which includes patterns for Brioche Pillows.

Mary, Mary Quite Contrary Socks by Arenda Holladay

By arendje | Cast On 2014

This [pattern](#) which appeared in the February-April 2014 (Spring 20014) issue provides instructions for a pair of stranded floral socks.

Broken Stitches in One Row by Binka Schwan

By admin | Cast On 2014



Knitting 911 November 2014-January 2015

This [article](#) which appeared in the November 2014-January 2015 (Winter 2014) issue is part of the Knitting 911 series.

Mary's Birthday Sweater by Mary Gildersleeve

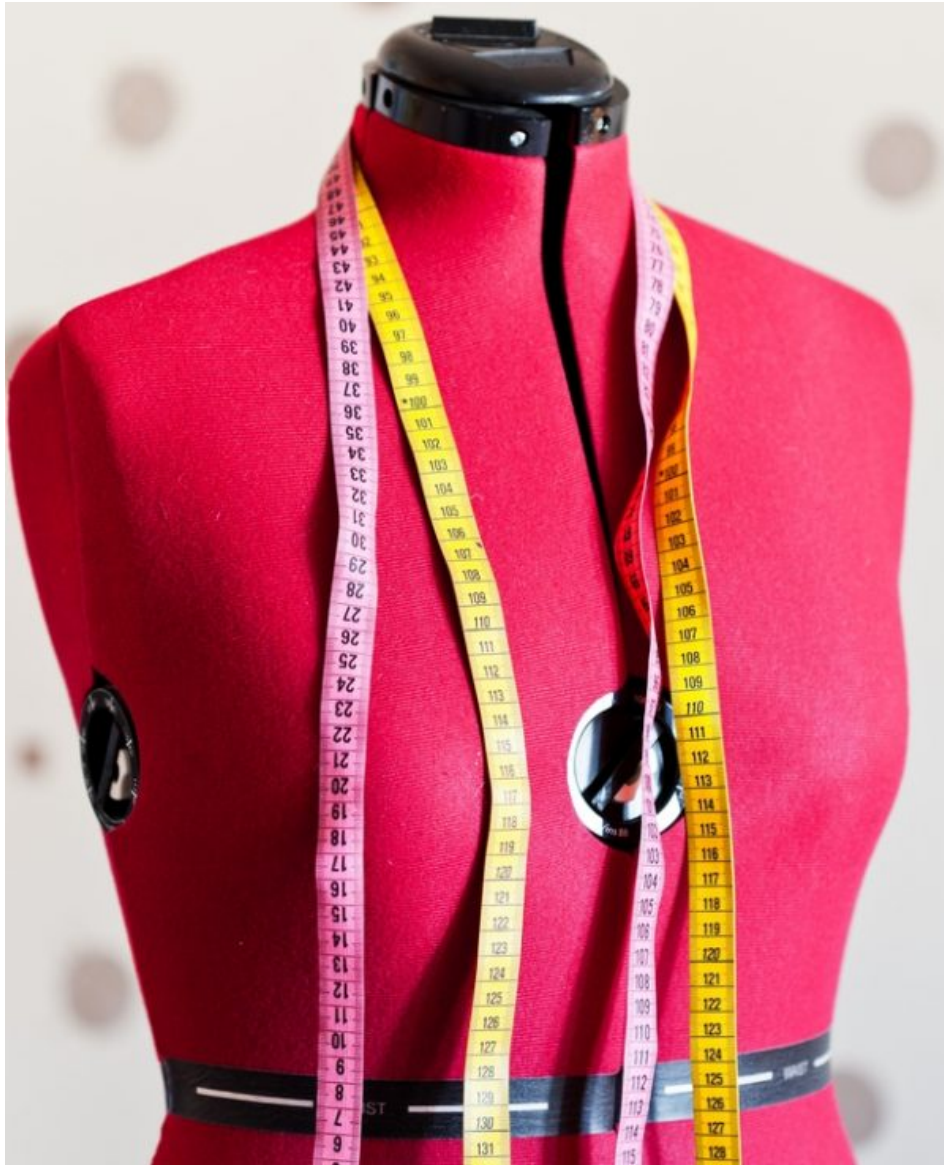
By arendje | Cast On 2014

This [pattern](#) appeared in the August-October 2014.

Here is a [link](#) to the charts.

Cowls by Leslie Gonzalez

By admin | Cast On 2014

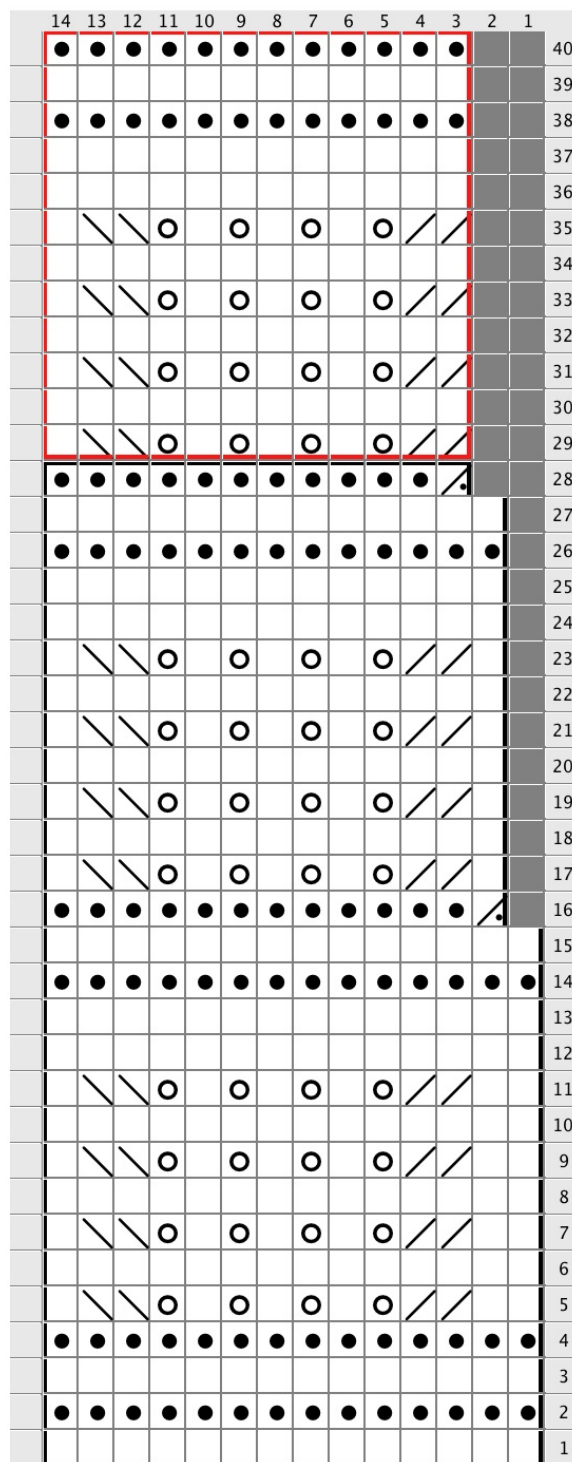


Fashion Framework November 2014-January 2015

This [article](#) which appeared in the November 2014-January 2015 (Winter 2014) issue is part of the Fashion Framework series. It includes a pattern.

Here is the chart for the cowl.

Crest of the Wave Lace



Legend:

knit

purl

k2tog

yo

ssk

No Stitch

p2tog

Notes:

Work rows 1–40 of the chart one time. Then continue to repeat rows 29–40 until cowl measures 17" from the beginning.

Black lines show multiple and repeat for the base of the cowl.

Red lines show multiple and repeat for the body of the cowl.

Each multiple is worked 10 times.

Decreases Part 2 Revisited by Binka Schwan

By admin | Cast On 2014



On Your Way to the Masters August-October 2014

This [article](#) which appeared in the August-October 2014 (Fall 2014) issue is part of the On Your Way to the Masters series.

Decreases Part 1 Revisited by Binka Schwan

By admin | Cast On 2014

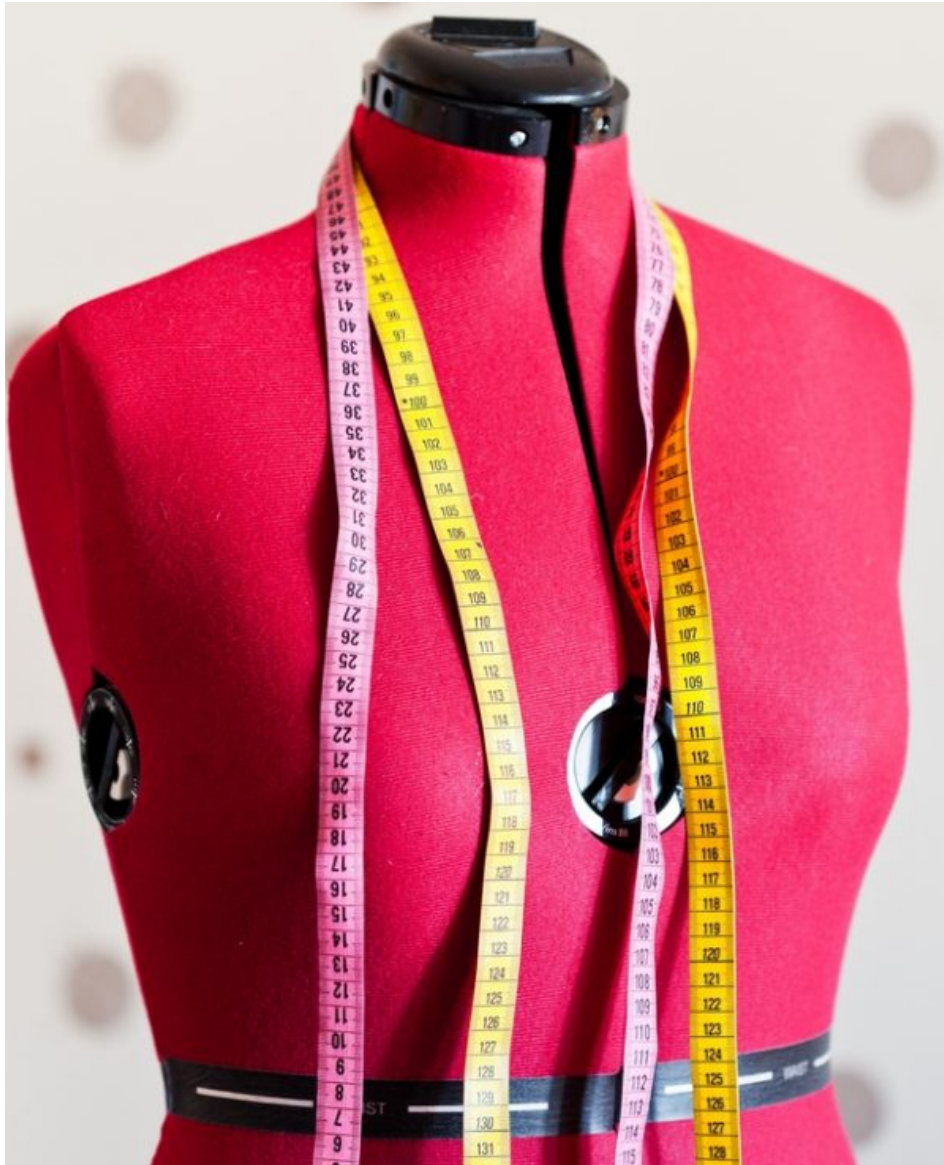


On Your Way to the Masters May-July 2014

This [article](#) which appeared in the May-July 2014 (Summer 2014) issue is part of the On Your Way to the Masters series.

Designing an Aran by Charles Gandy

By admin | Cast On 2014



Fashion Framework August-October 2014

This [article](#) which appeared in the August-October 2014 (Fall 2014) issue is part of the Fashion framework series. It includes a pattern for a sweater. [Aran sweaters](#).

Here are the charts and schematics for this sweater.

[Charts](#)

[Schematic A](#)

Schematic B

Kitchener Stitch by Arenda Holladay

By admin | Cast On 2014



Finishing with Confidence November 2014-January 2015

This [article](#) which appeared in the November 2014-January 2015 (Winter 2014) issue is part of the Finishing with Confidence.

Repairing Split Stitches in Finished Items by Binka Schwan

By admin | Cast On 2014



Knitting 911 August-October 2014

This [article](#) which appeared in the August-October 2014 (Fall 2014) issue is part of the Knitting 911 series.

Researching for the Masters by Joyce Jones

By admin | Cast On 2014



On Your Way to the Masters November 2014-January 2015

This [article](#) which appeared in the November 2014-January 2015 (Winter 2014) issue is part of the On Your Way to the Masters series.

Slip Stitch Knitting Redux by Leslie Gonzalez

By admin | Cast On 2014

Stitch Anatomy August-October 2014

This [article](#) which appeared in the August-October 2014 (Fall 2014) issue is part of the Stitch Anatomy series. It includes the patterns for two pillows.

The “Write” Stuff by Sharon Levering

By admin | Cast On 2014



On Your Way to the Masters February-April 2014

This [article](#) which appeared in the February-April 2014 (Spring 2014) issue is part of the On Your Way to the Masters series.

Three-Needle Bind off by Arenda Holladay

By admin | Cast On 2014



Finishing with Confidence August-October 2014

This [article](#) which appeared in the August-October 2014 (Fall 2014) issue is part of the Finishing with Confidence series.

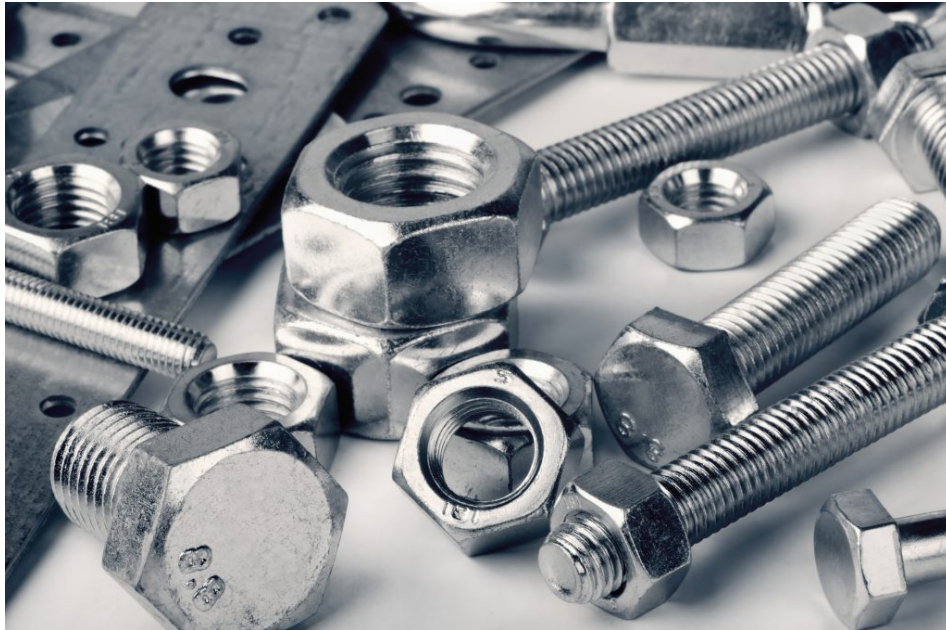
Striped Garter & Slip Stitch Scarf by Mary Anne Todd

By arendje | Cast On 2014

Click [here](#) for the pattern.

Demystifying the Yarn Over/Decrease Relationship in Lace by Leslie Gonzalez

By admin | Cast On 2014



Technical Article November 2014-January 2015

This [article](#) which appeared in the November 2014-January 2015 discusses the relationship between yarnovers and decreases in lace.

July Clover Sweater by Trudianne Temple

By admin | Cast On 2014

This [sweater](#) is a Level Three submission from Trudianne, based on the colors of clover in her hayfields during a drought. There are two charts that can be found [here](#) and [here](#).

Classic Pencil Skirt by Arenda Holladay

By arendje | Cast On 2014

The cable band at the skirt bottom is worked first and then stitches are picked up along the edge for the body of the skirt. [Pattern](#)

Coco Jacket by Arenda Holladay

By arendje | Cast On 2014

This jacket matches the [Classic Pencil Skirt](#). It has the same cable pattern at the bottom and fronts.
[Pattern](#)

Elise Jacket by Melissa Leapman

By arendje | Cast On 2014

This [pattern](#) appeared in the November-January 2014 issue.

Nordic Sweaters for the Entire Family by Arenda Holladay

By arendje | Cast On 2014

[Pattern](#)

[Charts](#)

Autumn Tree Socks by Catherine Reitsema

By arendje | Cast On 2014

[Pattern](#)

[Charts](#)

Entrelac Infinity Scarf by Gwen Bortner

By admin | Cast On 2014

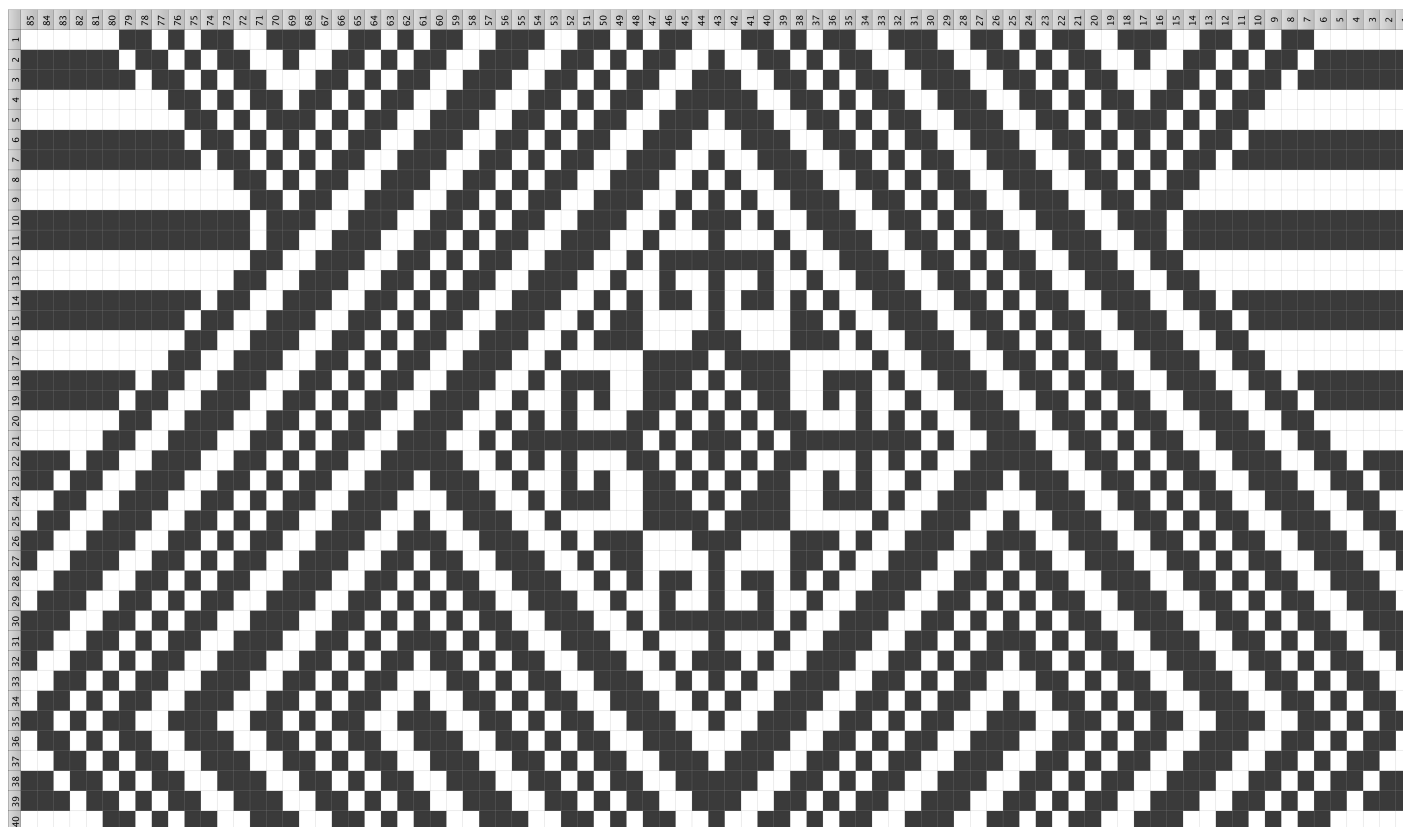
Great [pattern to practice entrelac](#).

Thara Cowl by Kyle Kunneke

By arendje | Cast On 2014

This [pattern](#) appeared in the August-October 2014 (Fall 2014) issue of Cast On.

Here is the chart for the cowl:



Setesdal Cardigan by Jaclyn Hagen

By arendje | Cast On 2014

This [pattern](#), Jaclyn Hagen's Level 3 sweater, appeared in the May-July 2014 issue.

[Charts](#)

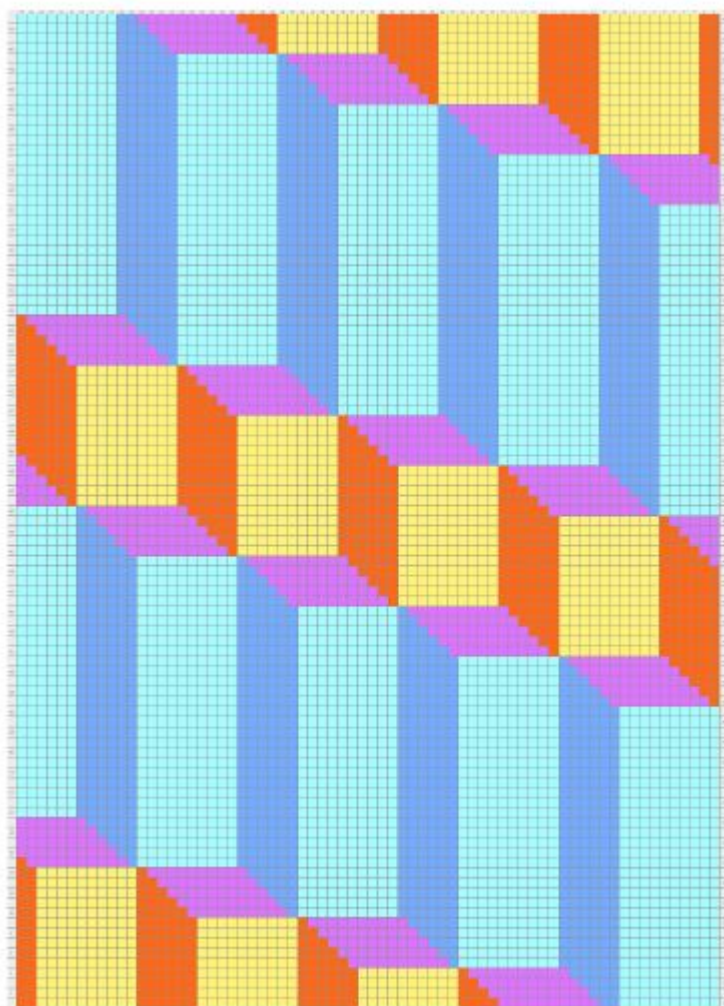
Intarsia by Suzanne Bryan

By admin | Cast On 2014

Stitch Anatomy May-July 2014

This [article](#) which appeared in the May-July 2014 (Summer 2014) issue is part of the Stitch Anatomy series. It includes patterns for two pillows. The charts for the two pillows are below.

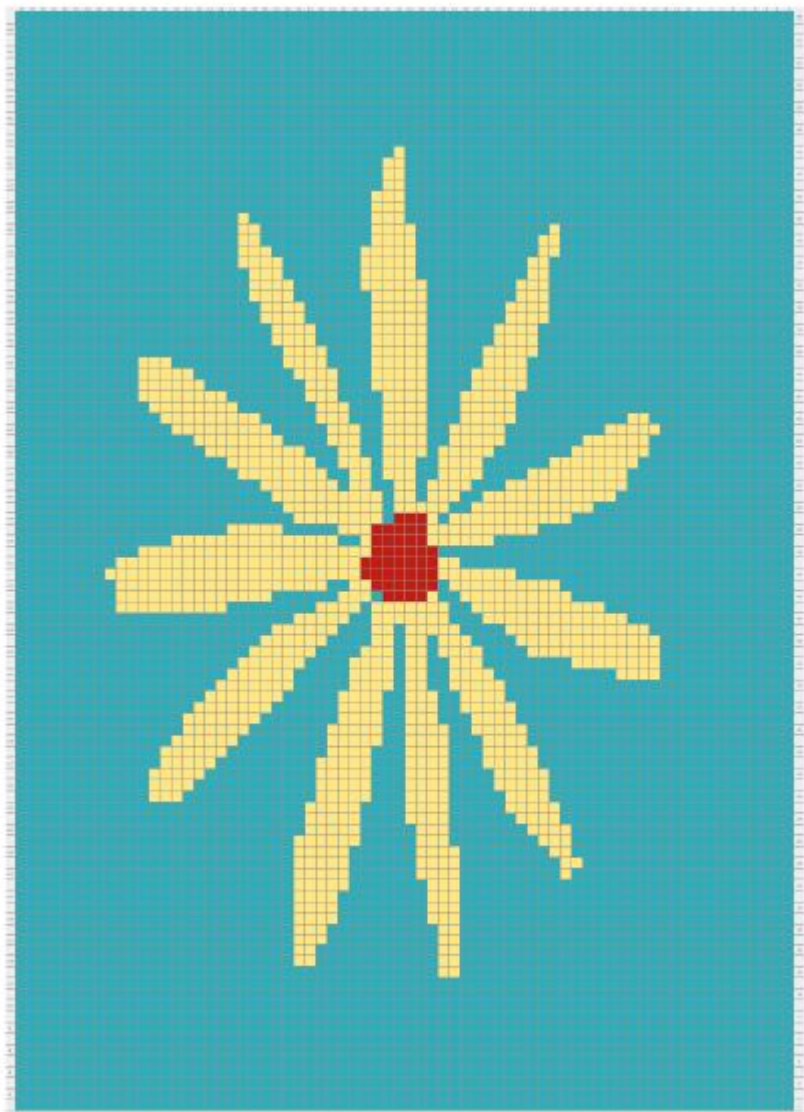
Boxes Pillow Chart and Legend



Legend

Dark Blue	
Light Blue	
Red	
Yellow	
Purple	

Black Eyed Susan Pillow Chart

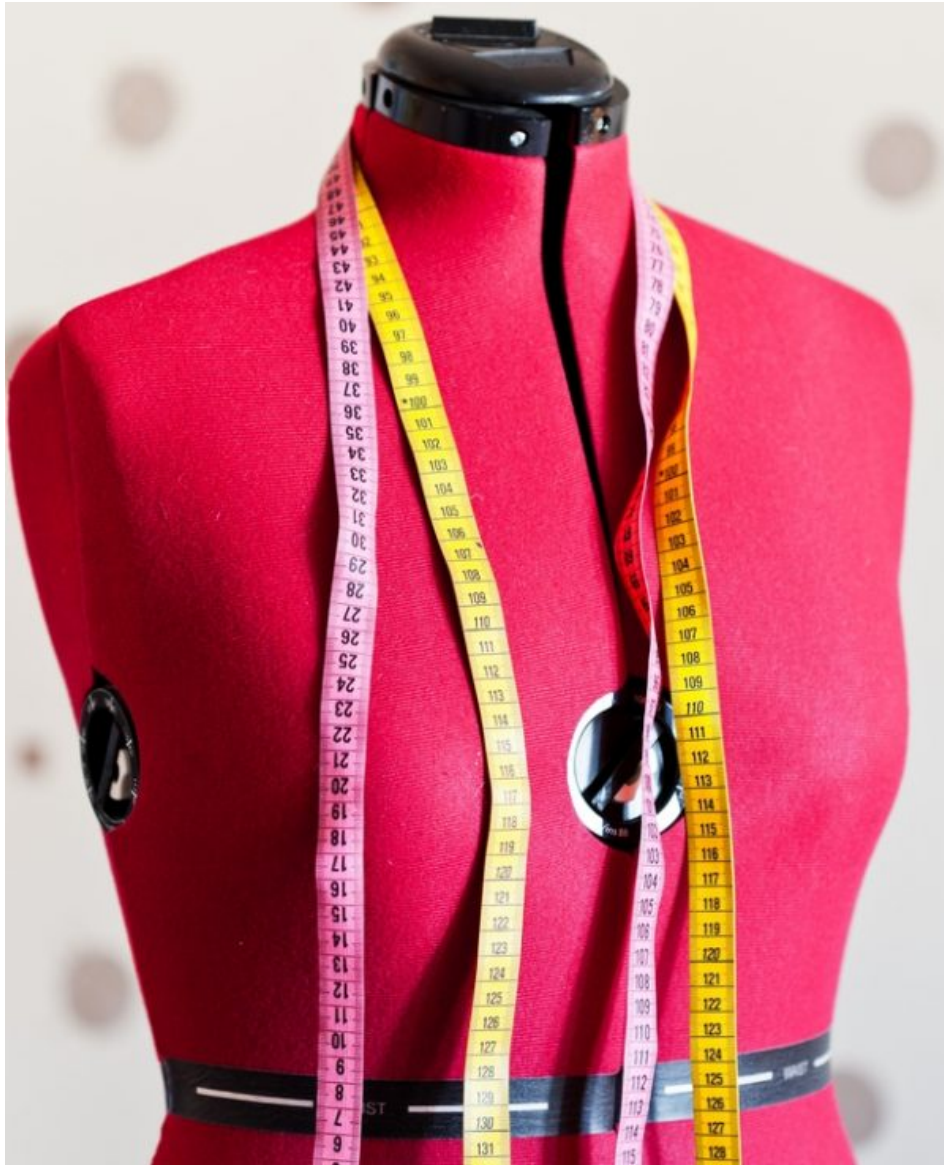


Legend

Blue	
Yellow	
Dark Red	

Men's Vests by Charles Gandy

By admin | Cast On 2014



Fashion Framework May-July 2014

This [article](#) which appeared in the May-July 2014 (Summer 2014) issue is part of the Fashion Framework series. It includes a pattern for a vest.

Seaming Stair Step Edges by Arenda Holladay

By admin | Cast On 2014

Finishing with Confidence-May-July 2014

This [article](#) which appeared in the May-July 2014 (Summer 2014) issue is part of the Finishing with Confidence series.

Cable Challenge Poncho and Infinity Scarf by Nancy Totten

By arendje | Cast On 2014

This [pattern](#) appeared in the August-October 2014 (Fall 2014) issue.

The History of the Humble Pattern - Part 2 by Kara Rudnick

By admin | Cast On 2014

This [article](#) appeared in the February-April 2014 issue.

Seaming Bound Off Edges by Arenda Holladay

By admin | Cast On 2014



Finishing with Confidence February-April 2014

This [article](#) appeared in the February-April 2014 (Spring 2014) issue as part of the Finishing with Confidence series.

Lace: The Dainty Doily by Carolyn Vance

By admin | Cast On 2014

Stitch Anatomy February-April 2014

This [article](#) appeared in the February-April 2014 (Spring 2014) issue as part of the Stitch Anatomy series.

Fixing a Broken Pulled Stitch by Binka Schwan

By admin | Cast On 2014

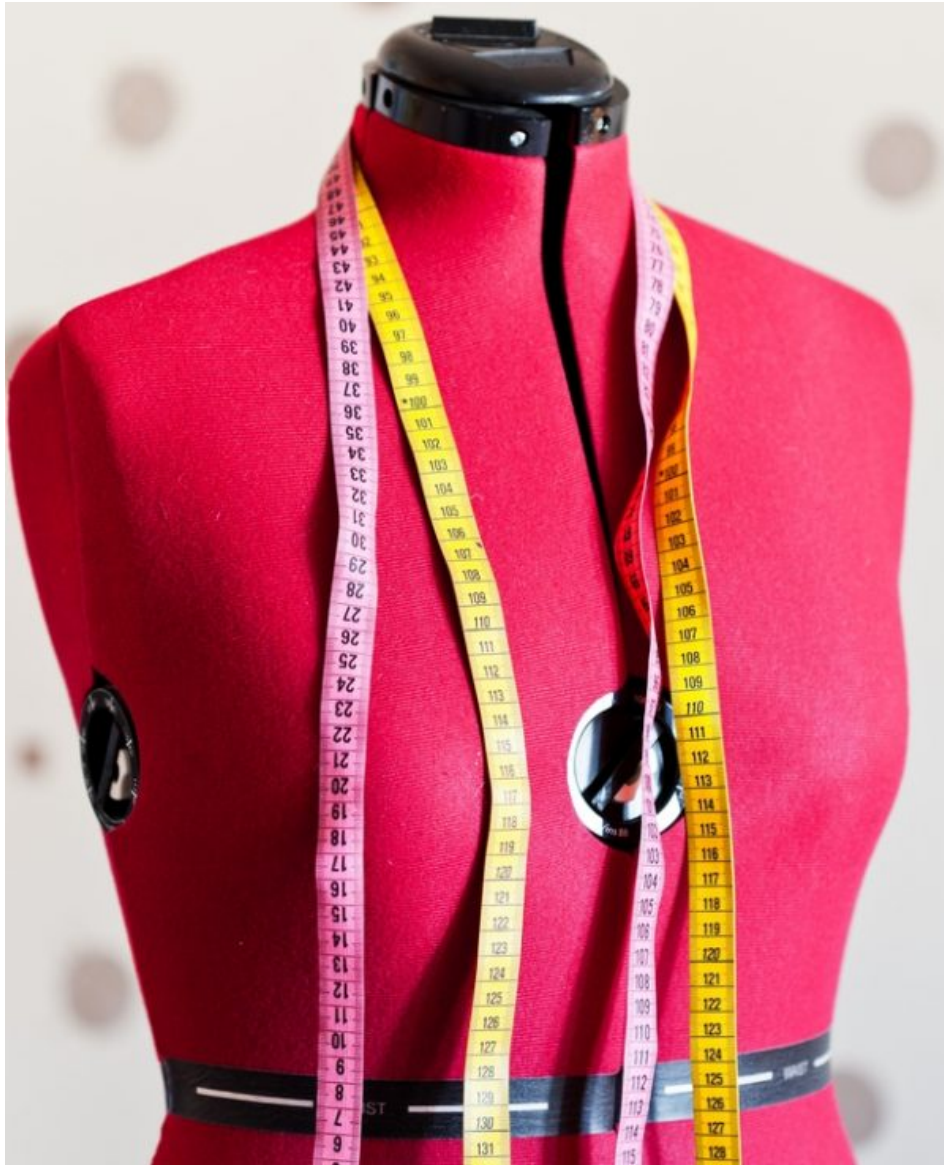


Knitting 911 February-April 2014

This [article](#) appeared in the February-April 2014 (Spring 2014) issue as part of the Knitting 911 series.

Dog Sweaters by Leslie Gonzalez

By admin | Cast On 2014



Fashion Framework February-April 2014

This [article](#) appeared in the February-April 2014 (Spring 2014) issue as part of the Fashion Framework series. It includes a pattern for a dog sweater.

Widget's Rainbow Dog Sweater by Pamela Haswell

By arendje | Cast On 2014

This [pattern](#) appeared in the February-April 2014 (Spring 2014) issue. Here are the [charts](#).

Summer Nights by Arenda Holladay

By admin | Cast On 2014

This is the final sweater in Arenda's four seasons Fair Isle sweaters. The pattern and schematics are included [here](#). The Fish Chart can be difficult to read. [Here](#) is a version broken down into 50 column segments.

Classic Twin Set by Arenda Holladay

By arendje | Cast On 2014

This [pattern](#) appeared in the February-April 2014 issue.

Split Stitches by Binka Schwan

By arendje | Cast On 2014



Knitting 911 May-July 2014

This [article](#) which appeared in the May-July 2014 issue is part of the Knitting 911 series.

Puffy Hat and Cowl Set by Kathy Perry

By arendje | Cast On 2014

This [pattern](#) appeared in the August-October 2014 issue.

Holiday Top by Arenda Holladay

By arendje | Cast On 2014

This [pattern](#) appeared in the November 2014-January 2015 issue. Note that the video links can be found by searching Youtube for “Confident Beginner Holiday Top”. The TKGA.com/CastOn/About website no longer exists. The video for BJ’s Cast On can be found here: <https://www.youtube.com/watch?v=PvWCnS2DouQ>