

# Cast On 2011



# Table of Contents

<b>Elongated Stitch Sampler Top by Suzanne Bryan</b>	<b>1</b>
<b>Know How to Fix Your Knitting Mistakes by Binka Schwan</b>	<b>2</b>
<b>Leaves of Spring by Arenda Holladay</b>	<b>3</b>
<b>Herringbone Lesson by Mary Forte</b>	<b>4</b>
<b>Hoods, Pockets and Zippers by Arenda Holladay</b>	<b>5</b>
<b>Tension Concerns - Part 3 by Binka Schwan</b>	<b>6</b>
<b>Toe-Up Argyle Socks</b>	<b>7</b>
<b>Dropped Stitches in Stockinette by Binka Schwan</b>	<b>8</b>
<b>Yoke Sweater Lesson by Leslie Gonzalez</b>	<b>9</b>
<b>Pattern Writing Revisited - Part 1 by Binka Schwan</b>	<b>10</b>
<b>Pattern Writing Revisited Part 2 by Binka Schwan</b>	<b>11</b>
<b>Single Increase Savvy by Binka Schwan</b>	<b>12</b>
<b>Knots and Oughts Socks by Arenda Holladay</b>	<b>13</b>
<b>Central Double Increases by Binka Schwan</b>	<b>14</b>
<b>A Gift for the Bride or Fun with Lace</b>	<b>15</b>
<b>Brioche Lesson by Mary Forte</b>	<b>16</b>
<b>Cuff Down Socks with Gussets by Suzanne Bryan</b>	<b>17</b>
<b>Knitting Emergencies Do Happen by Binka Schwan</b>	<b>18</b>
<b>Mosaic Knitting by Suzanne Bryan</b>	<b>19</b>
<b>Reading and Understanding Charts by Leslie Gonzalez</b>	<b>20</b>
<b>Seafoam Shawl by Arenda Holladay</b>	<b>21</b>
<b>Elongated Stitches by Suzanne Bryan</b>	<b>22</b>
<b>Autumn on State Routes 12 and 24</b>	<b>23</b>
<b>Evenly Spacing Decreases by Mary Forte</b>	<b>24</b>
<b>Tam Lesson by Mary Forte</b>	<b>25</b>
<b>Aran Hat by Suzanne Bryan</b>	<b>26</b>

---

# Elongated Stitch Sampler Top by Suzanne Bryan

By admin | Cast On 2011

This is a sleeveless [summer top](#) with a scoop neck and a buttons up the top.

# Know How to Fix Your Knitting Mistakes by Binka Schwan

By admin | Cast On 2011



## Knitting 911

This [article](#) which appeared in the May-July 2011 issue is part of the Knitting 911 series. The topic is “unknitting”. Mary Forte is mistakenly cited as the author.

# Leaves of Spring by Arenda Holladay

By arendje | Cast On 2011

The [pattern](#) for the Leaves of Spring appeared in the February - April 2011 issue of Cast On.

# Herringbone Lesson by Mary Forte

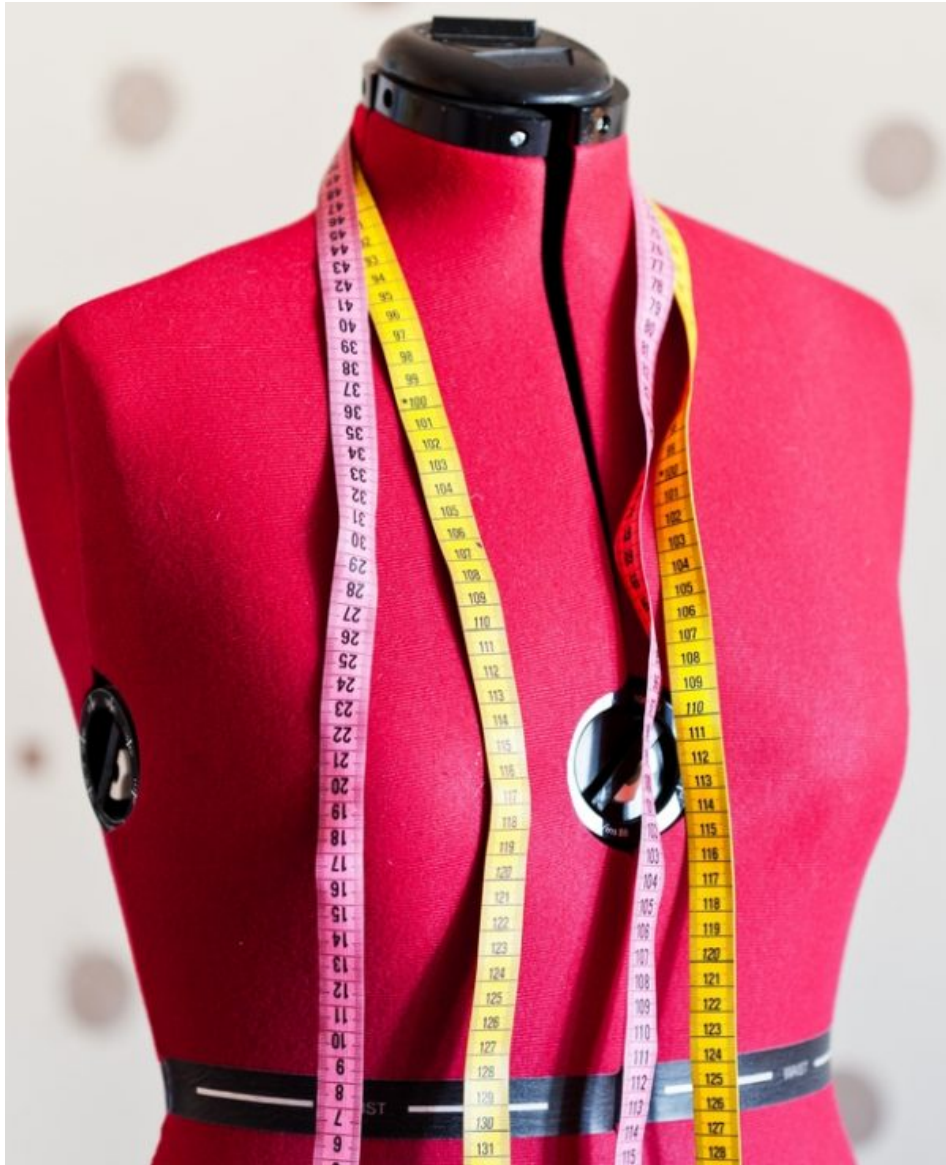
By admin | Cast On 2011

## Stitch Anatomy November 2011-January 2012

This [article](#) which appeared in the November 2011-January 2012 (Winter 2011/12) issue is part of the Stitch Anatomy series.

# Hoods, Pockets and Zippers by Arenda Holladay

By admin | Cast On 2011



## Fashion Framework November 2011-January 2012

This [article](#) which appeared in the November 2011-January 2012 issue is part of the Fashion Framework series.

# Tension Concerns - Part 3 by Binka Schwan

By admin | Cast On 2011



## Knitting 911 February-April 2011

This [article](#) which appeared in the February-April 2011 is part of the Knitting 911 series.

# Toe-Up Argyle Socks

By admin | Cast On 2011

A [toe-up argyle sock](#) (check Level 2 directions before deciding to use this one for your project)

# Dropped Stitches in Stockinette by Binka Schwan

By arendje | Cast On 2011

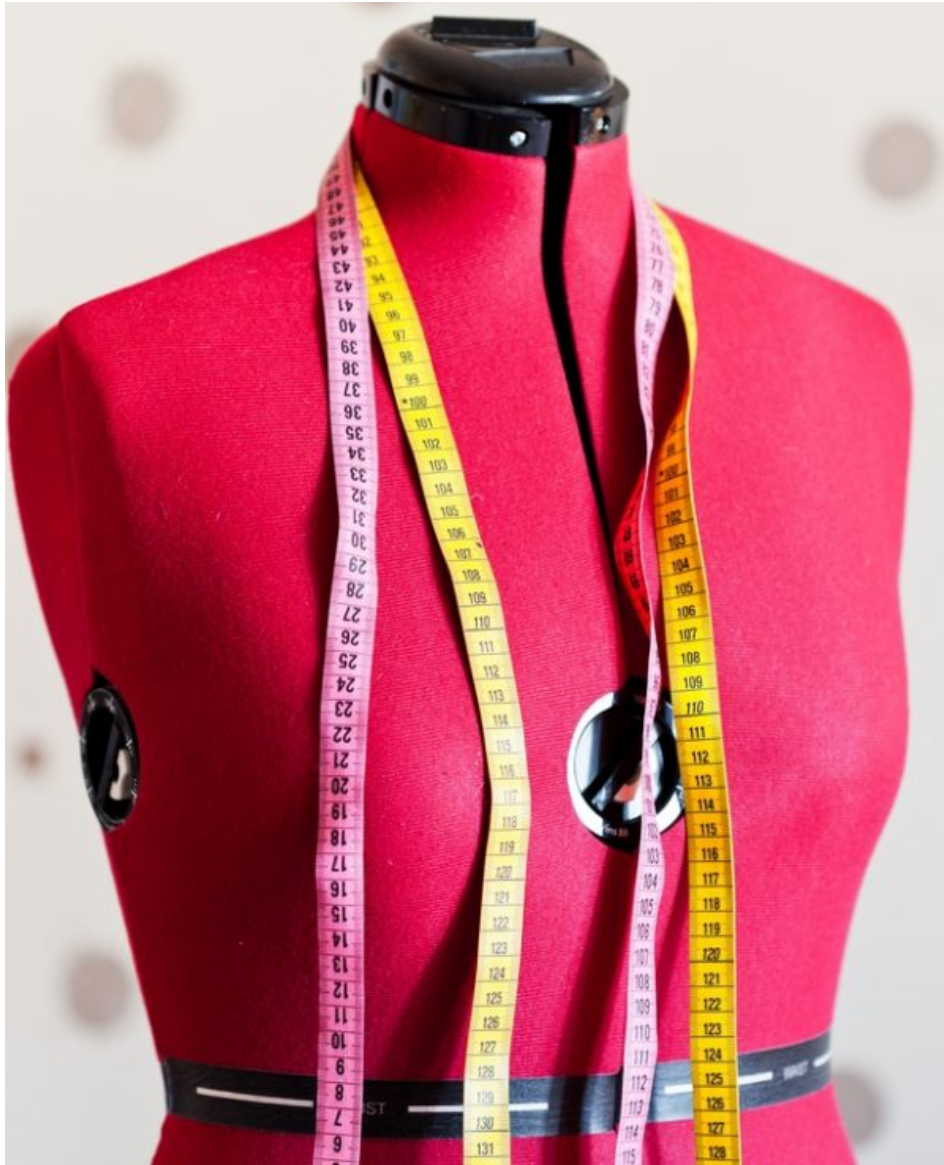


**Knitting 911 November 2011-January 2012**

This [article](#) which appeared in the November 2011-January 2012 issue is part of the Knitting 911 series.

# Yoke Sweater Lesson by Leslie Gonzalez

By arendje | Cast On 2011



## Fashion Framework February-April 2011

This [article](#) which appeared in the February-April 2011 issue is part of the Fashion Framework series.

# Pattern Writing Revisited - Part 1 by Binka Schwan

By admin | Cast On 2011



## On Your Way to the Masters February-April 2011

This [article](#) which appeared in the February-April 2011 (Spring 2011) is part of the On Your Way to the Masters series. It discusses using the pattern template when for swatch patterns.

# Pattern Writing Revisited Part 2 by Binka Schwan

By admin | Cast On 2011



## On Your Way to the Masters May-July 2011

This [article](#) which appeared in the May-July 2011 (Summer 2011) issue is part of the On Your Way to the Masters articles. It discusses how to write patterns for garments. Designing a sweater and providing a pattern for that garment is required in Level 3 of the Masters Program.

# Single Increase Savvy by Binka Schwan

By admin | Cast On 2011



## On Your Way to the Masters August-October 2011

This [article](#) which appeared in the August-October 2011 (Fall 2011) is part of the On Your Way to the Masters series of articles. It discusses various types of increases and where to use them. The ability to work increases correctly is part of Level 1 of the Masters Program.

# Knots and Oughts Socks by Arenda Holladay

By arendje | Cast On 2011

This [pattern](#) includes directions for both crew length and knee-high socks.

# Central Double Increases by Binka Schwan

By admin | Cast On 2011



## On Your Way to the Masters November 2011-January 2012

This [article](#) which appeared in the November 2011-February 2012 (Winter 2011) issue as part of the On Your Way to the Masters article.

# A Gift for the Bride or Fun with Lace

By admin | Cast On 2011

Patterns for [linen lace towels](#).

# Brioche Lesson by Mary Forte

By arendje | Cast On 2011

## Stitch Anatomy February-April 2011

This [article](#), in the Stitch Anatomy Series, discusses the Brioche Stitch. It also provides patterns for two pillows to illustrate the technique.

# Cuff Down Socks with Gussets by Suzanne Bryan

By admin | Cast On 2011



## Fashion Framework August-October 2011

This [article](#) which appeared in the August-October 2011 (Fall 2011) issue is part of the Fashion Framework series. It includes patterns for three pairs of socks.

# Knitting Emergencies Do Happen by Binka Schwan

By admin | Cast On 2011

## Knitting 911 August-October 2011

This [article](#) which appeared in the August-October 2011 (Fall 2011) issue is part of the Knitting 911 series.

# Mosaic Knitting by Suzanne Bryan

By admin | Cast On 2011

## Stitch Anatomy August-October 2011

This [article](#) which appeared in the August-October 2011 (Fall 2011) issue is part of the Stitch Anatomy series. It includes patterns for two pillows.

# Reading and Understanding Charts by Leslie Gonzalez

By admin | Cast On 2011



## Technical Article August-October 2011

This [article](#) appeared in the August-October 2011 (Fall 2011) issue.

# Seafoam Shawl by Arenda Holladay

By arendje | Cast On 2011

## Pattern

## Errata

The pattern as printed had a mistake. Here is the correction:

Seafoam Shawl - page 15 Row 3 (RS): K6, \*yo, k1, yo2, k1, yo3, k1, yo2, k1, yo, k6, rep from \*. Row 4: Knit all stitches dropping yarnovers.

Row 7: K1, \*yo, k1, yo2, k1, yo3, k1, yo2, k1, yo, k6, rep from \* to last 5 sts.\*Yo, k1, yo2, k1, yo3, k1, yo2, k1, yo, k1. Row 8: Knit all stitches dropping yarnovers.

# **Elongated Stitches by Suzanne Bryan**

By admin | Cast On 2011

## **Stitch Anatomy May-July 2011**

This [article](#) which appeared in the May-July 2011 (Summer 2011) issue is part of the Stitch Anatomy series.

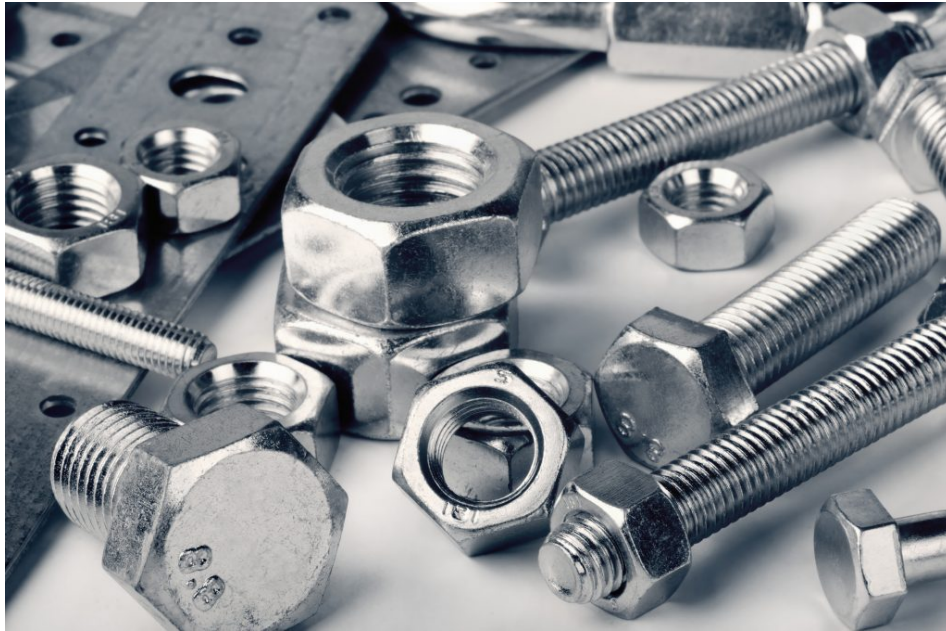
# Autumn on State Routes 12 and 24

By admin | Cast On 2011

One of [Arenda's Four Season Sweaters](#).

# Evenly Spacing Decreases by Mary Forte

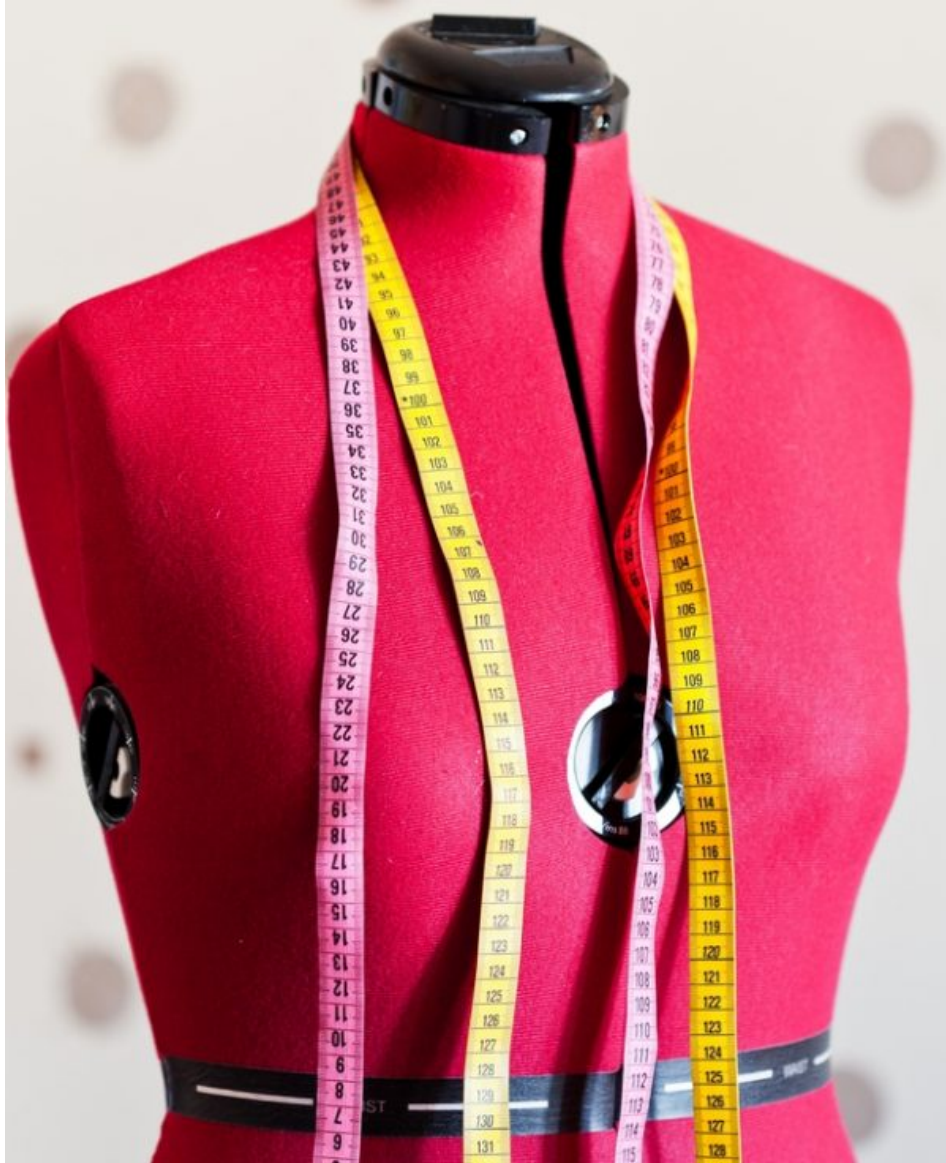
By arendje | Cast On 2011



This [technical article](#) appeared in the May-July 2011 issue of Cast On.

# Tam Lesson by Mary Forte

By arendje | Cast On 2011



## Fashion Framework May-July 2011

This [article](#) which appeared in the May-July 2011 issue is part of the Fashion Framework series.

# Aran Hat by Suzanne Bryan

By arendje | Cast On 2011

This [pattern](#) appeared in the February - April 2011 issue.